

Evaluating Student Achievement Outcomes

(SACSCOC Standard 8.1)

Updates to APSU's Approved
Student Achievement Outcomes

April 10, 2023

SACSCOC Standard 8.1

- “The institution identifies, evaluates, and publishes goals and outcomes for student achievement appropriate to the institution’s mission, the nature of the students it serves, and the kinds of programs offered. The institution uses multiple measures to document student success.”

APSU's Selected Criteria for Student Achievement

- Retention Rate – Undergraduate Students
- IPEDS Outcomes Measure – Undergraduate Students
- 6-Year Graduation Rate* – Undergraduate Students
- 3- and 4-Year Graduation Rate – Graduate Students
- Licensure Exam Passing Rates

*APSU's selected completion indicator submitted to SACSCOC in 2018

Comparator Peers

CSRDE

(Consortium for Student Retention Data Exchange)

- Nationwide Participation
- Public Institutions
- Moderately Selective
 - Highly Selective > 24 ACT
 - Selective 22.5 – 24 ACT
 - Moderately Selective 21 – 22.4 ACT
 - Less than Selective < 21 ACT
- 75 institutions in the Moderately Selective sub-group

Tennessee Peers

- East Tennessee State University
- Middle Tennessee State University
- Tennessee Tech University
- Tennessee State University
- UT – Chattanooga
- UT – Martin
- University of Memphis

Retention Rate – Select Groups With Tennessee Averages and CSRDE* Rates

(FT/FT Cohort, First to Second
Year Retention of All Degree-
Seeking Undergraduate Students)

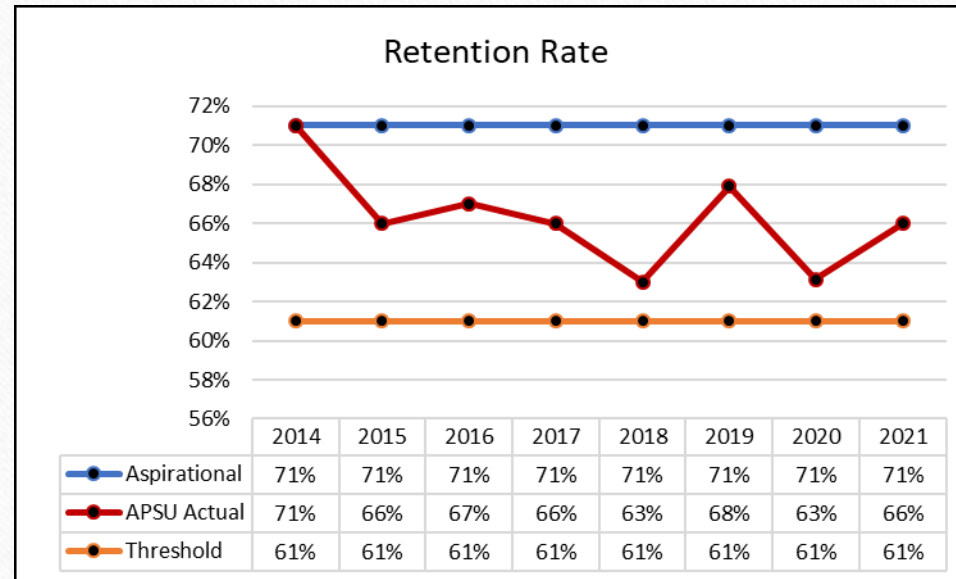
*Moderately Selective is average
ACT Score of 21 at public, four-
year institutions participating in
CSRDE

APSU Retention Rate And Comparable Data										
Type	2017 Cohort		2018 Cohort		2019 Cohort		2020 Cohort		2021 Cohort	
	N	% Ret	N	% Ret	N	% Ret	N	% Ret	N	% Ret
All APSU Freshmen in Cohort	1,755	65.75%	1,819	63.39%	1,516	67.88%	1,258	63.12%	1,281	65.57%
Female	1,026	68.91%	1,104	64.22%	917	73.94%	795	64.40%	768	66.67%
Male	729	61.32%	715	62.10%	599	58.60%	463	60.91%	513	63.94%
Non-Resident Alien	‡	75.00%	‡	66.67%	10	70.00%	‡	100.00%	‡	100.00%
Hispanic	129	64.34%	144	59.03%	138	69.57%	113	57.52%	116	64.66%
American Indian or Alaska Native	‡	50.00%	‡	83.33%	‡	60.00%	‡	50.00%	‡	80.00%
Asian	22	77.27%	13	61.54%	17	82.35%	18	77.78%	43	72.09%
Black, Not Hispanic	463	61.77%	537	62.38%	352	63.35%	315	58.73%	279	66.31%
Native Hawaiian or other Pacific Islander	‡	100.00%	‡	50.00%	‡	100.00%	0	0.00%	‡	0.00%
White	983	66.94%	951	64.88%	865	69.60%	687	65.65%	682	65.98%
Two or More Races	113	69.03%	142	61.27%	97	58.76%	98	63.27%	96	61.46%
Race/Ethnicity Unknown	27	70.37	21	61.90%	31	83.87%	23	60.87%	53	58.49%
Adult Learner	35	60.00%	22	59.09%	40	52.50%	24	58.33%	22	45.45%
Pell	983	62.97%	1,033	59.83%	845	66.15%	644	59.47%	628	61.46%
First Generation	639	60.56%	706	60.20%	376	66.22%	325	60.92%	275	61.82%
Opportunity Admit	414	61.84%	461	54.66%	397	60.96%	306	57.52%	279	57.35%
Unconditional	1,341	66.96%	1,358	66.35%	1,119	70.33%	952	64.92%	1,002	67.86%
CSRDE (Moderately Selective) - Male	44,295	75.2%	34,809	73.30%	30,557	74.90%	19,144	72.70%	N/A	N/A
CSRDE (Moderately Selective) - Female	58,754	79.4%	48,038	77.80%	42,771	79.70%	27,920	76.40%	N/A	N/A
CSRDE (Moderately Selective) - Black	11,912	71.9%	11,390	71.20%	8,422	74.90%	5,080	68.10%	N/A	N/A
CSRDE (Moderately Selective) - Hispanic	20,007	78.0%	14,062	75.00%	13,749	78.70%	8,595	75.50%	N/A	N/A
CSRDE (Moderately Selective) - Asian	7,547	87.1%	3,785	81.70%	3,811	86.60%	3,027	87.10%	N/A	N/A
CSRDE (Moderately Selective) - American Indian	605	62.6%	386	64.90%	389	66.30%	184	52.70%	N/A	N/A
CSRDE (Moderately Selective) - White	53,693	77.6%	46,520	77.10%	41,207	77.60%	26,697	75.20%	N/A	N/A
CSRDE (Moderately Selective) - Non-Resident Alien	2511	81.1%	1,398	77.20%	1,287	78.20%	549	79.20%	N/A	N/A
CSRDE (Moderately Selective) - All	103,051	77.6%	82,856	75.90%	73,328	77.70%	47,064	74.90%	N/A	N/A
Tennessee Peer Average Excluding APSU	14,024	73.00%	13,696	73.14%	14,059	75.57%	13,942	75.71%	13,942	69.00%

‡ Populations <10 are not displayed

NOTE:

IPEDS retention data are not divided by gender or race/ethnicity, so Tennessee Peer data by these groupings cannot be provided.



Note: Aspirational = $(3\text{-Year APSU Retention Average} + 3\text{-Year TN Peer Retention Average})/2$
Threshold = Aspirational – 10 points

Six-Year Graduation Rate – Select Groups With Tennessee Averages and CSRDE* Rates

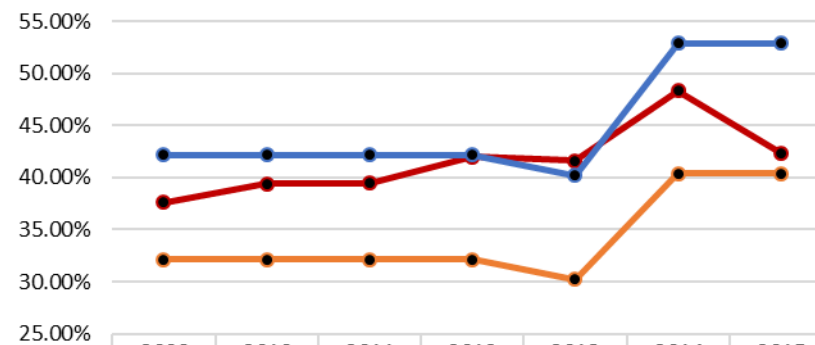
(FT/FT Cohort Includes All Degree-
Seeking Undergraduate Students)

*Moderately Selective is average ACT Score
of 21 at public, four-year institutions
participating in CSRDE

APSU 6-Year Graduation Rate - Select Groups										
Type	2011 Cohort		2012 Cohort		2013 Cohort		2014 Cohort		2015 Cohort	
	N	% Grad	N	% Grad	N	% Grad	N	% Grad	N	% Grad
All APSU Freshmen in Cohort	1,274	39.48%	1,182	41.96%	1,237	43.41%	1,184	48.31%	1,280	42.34%
Female	733	42.02%	705	46.10%	714	48.32%	683	54.76%	745	47.52%
Male	541	36.04%	477	35.85%	523	36.71%	501	39.52%	535	35.14%
Non-Resident Alien	‡	60.00%	‡	100.00%	‡	50.00%	‡	50.00%	‡	100.00%
Hispanic	50	46.00%	40	47.50%	51	37.25%	53	50.94%	67	40.30%
American Indian or Alaska Native	‡	25.00%	‡	0.00%	‡	0.00%	‡	25.00%	‡	66.67%
Asian	16	56.25%	13	61.54%	15	60.00%	14	57.14%	10	80.00%
Black, Not Hispanic	234	30.77%	226	35.84%	240	42.08%	219	44.29%	285	40.70%
Native Hawaiian or other Pacific Islander	‡	66.67%	‡	0.00%	‡	0.00%	‡	33.33%	‡	0.00%
White	871	41.56%	812	43.10%	842	43.59%	791	49.18%	795	42.64%
Two or More Races	55	34.55%	59	47.46%	56	46.43%	77	50.65%	91	38.46%
Race/Ethnicity Unknown	36	33.33%	22	36.36%	27	48.15%	19	42.11%	24	23.81%
Adult Learner	51	29.41%	42	33.33%	46	26.09%	42	28.75%	42	35.71%
Pell	703	32.15%	646	36.07%	641	33.23%	589	41.60%	704	38.49%
First Generation	581	34.08%	530	33.77%	416	40.63%	367	43.60%	402	40.80%
Opportunity Admit	246	32.93%	225	24.89%	255	28.63%	214	34.11%	309	32.69%
Unconditional	1,028	41.05%	957	45.98%	982	43.08%	970	51.44%	971	45.42%
CSRDE (Moderately Selective) - Male	42,250	49.60%	42,447	51.10%	34,809	51.10%	30,645	50.80%	21,380	49.80%
CSRDE (Moderately Selective) - Female	52,792	57.70%	53,015	58.90%	48,038	59.40%	41,066	59.47%	27,943	59.30%
CSRDE (Moderately Selective) - Black	10,811	39.10%	10,881	41.60%	11,390	44.70%	8,375	45.50%	5,553	42.00%
CSRDE (Moderately Selective) - Hispanic	13,853	53.70%	14,478	55.30%	14,062	53.30%	10,635	56.10%	6,463	53.60%
CSRDE (Moderately Selective) - Asian	6,834	66.20%	6,745	67.10%	3,785	63.00%	3,356	65.90%	2,672	69.10%
CSRDE (Moderately Selective) - American Indian	769	34.70%	759	36.20%	386	37.20%	506	34.30%	215	42.80%
CSRDE (Moderately Selective) - White	55,366	56.10%	54,456	57.40%	46,250	58.80%	42,694	57.80%	30,116	57.40%
CSRDE (Moderately Selective) - Non-Resident Alien	1,673	58.90%	2,005	58.20%	1,398	56.00%	1,688	54.00%	1,375	56.00%
CSRDE (Moderately Selective) - All	95,042	54.10%	95,466	55.50%	82,856	55.90%	4,457	55.70%	49,323	55.20%
Tennessee Peer Average Excluding APSU	N/A	43.09%	N/A	45.43%	N/A	45.27%	N/A	48.71%	N/A	50.86%
Tennessee Peer Average - Male	N/A	38.86%	N/A	41.29%	N/A	40.90%	N/A	43.86%	N/A	46.29%
Tennessee Peer Average - Female	N/A	46.71%	N/A	48.71%	N/A	48.95%	N/A	52.57%	N/A	54.43%
Tennessee Peer Average - Non-Resident Alien	N/A	40.43%	N/A	62.57%	N/A	52.29%	N/A	55.57%	N/A	51.71%
Tennessee Peer Average - Hispanic	N/A	46.00%	N/A	42.71%	N/A	44.29%	N/A	45.43%	N/A	49.57%
Tennessee Peer Average - American Indian or Alaska Native	N/A	39.00%	N/A	46.57%	N/A	34.90%	N/A	42.83%	N/A	51.86%
Tennessee Peer Average - Asian	N/A	49.57%	N/A	58.29%	N/A	54.86%	N/A	57.71%	N/A	41.67%
Tennessee Peer Average - Black, Not Hispanic	N/A	34.43%	N/A	35.29%	N/A	34.38%	N/A	40.43%	N/A	41.29%
Tennessee Peer Average - Native Hawaiian or Other Pacific Islander	N/A	70.00%	N/A	77.67%	N/A	61.72%	N/A	33.25%	N/A	41.67%
Tennessee Peer Average - White	N/A	45.43%	N/A	49.43%	N/A	47.95%	N/A	50.71%	N/A	55.86%
Tennessee Peer Average - Two or More Races	N/A	40.14%	N/A	37.00%	N/A	40.14%	N/A	36.43%	N/A	39.43%
Tennessee Peer Average - Race/Ethnicity Unknown	N/A	29.50%	N/A	42.50%	N/A	38.78%	N/A	35.17%	N/A	51.00%

‡ Populations <10 are not displayed

6- Year Graduation Rate - All In Cohort



	2009	2010	2011	2012	2013	2014	2015
APSU	37.61%	39.38%	39.48%	41.96%	41.62%	48.31%	42.34%
Threshold	32.14%	32.14%	32.14%	32.14%	30.22%	40.40%	40.40%
Aspirational	42.14%	42.14%	42.14%	42.14%	40.22%	52.88%	52.88%

*Note: Aspirational = (3-Year APSU OM Average + 3-Year TN Peer OM Average)/2

Threshold = Aspirational – 10 points

Eight-Year Undergraduate Graduation Rate

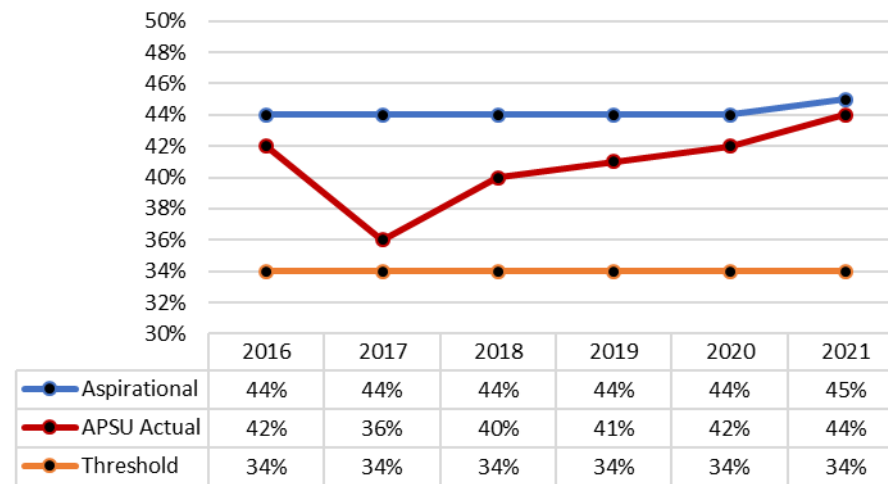
Based on the IPEDS "new" Outcome Measure (OM) that includes all First-time Degree-Seeking Students (Including Associate Degree)

Year indicates 8 year graduation window after entering. (eg. 2018 is Cohort from 2010)

IPEDS previously provided only 1 year of data for the new OM. Now IPEDS includes 3 years of data for the new OM, however it is not disaggregated by student groups.

Outcome Measures						
School	2016	2017	2018	2019	2020	2021
APSU	42%	36%	40%	41%	42%	44%
ETSU	51%	50%	49%	50%	53%	55%
MTSU	52%	48%	46%	49%	48%	50%
TSU	48%	36%	39%	44%	39%	40%
TTU	57%	58%	56%	56%	60%	57%
UM	49%	48%	48%	49%	49%	52%
UTC	44%	47%	50%	51%	50%	48%
UTM	51%	49%	51%	48%	52%	54%
TN Peers Average	50%	48%	48%	50%	50%	51%

IPEDS Outcome Measure (8-Year Grad Rate)



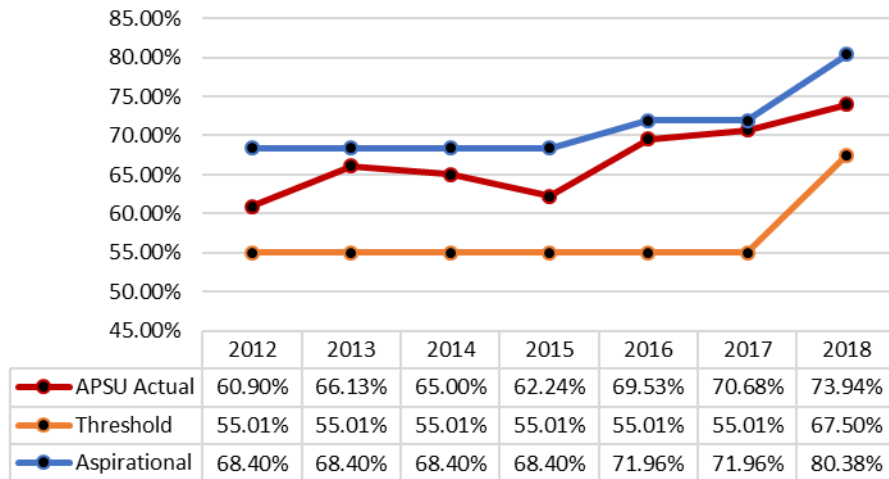
*Note: Aspirational = (3-Year APSU OM Average + 3-Year TN Peer OM Average)/2
 Threshold = Aspirational – 10 points

Graduate Student Graduation Rate (Degree-Seeking Students Only) -No Comparators

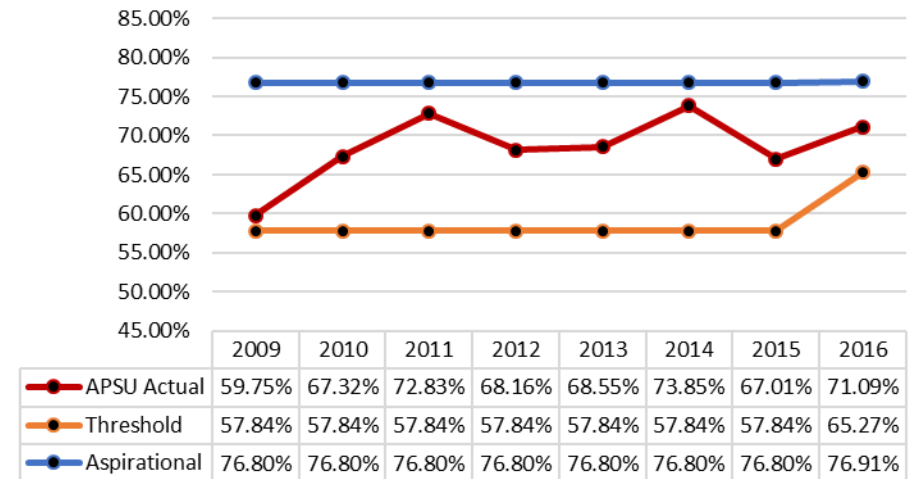
Full and Part-Time Graduate Students							
Year	New Fall Graduate Students	Graduated Within 3 Years	3-Year Grad Rate	Graduated Within 4 Years	4-Year Grad Rate	Graduated Within 6 Years	6-Year Grad Rate
2009	318	155	48.74%	180	56.60%	190	59.75%
2010	257	149	57.98%	163	63.42%	173	67.32%
2011	254	157	61.81%	172	67.72%	185	72.83%
2012	267	143	53.56%	161	60.30%	182	68.16%
2013	248	142	57.26%	160	64.52%	170	68.55%
2014	260	164	63.08%	181	69.62%	192	73.85%
2015	294	178	60.54%	183	62.24%	197	67.01%
2016	256	165	64.45%	178	69.53%	184	71.09%
2017	307	205	66.67%	217	70.68	N/A	N/A
2018	426	297	69.72%	N/A	73.94	N/A	N/A
2019	321	216	67.29%	N/A	N/A	N/A	N/A
Average			58.43%		63.49%		67.32%

Graduate Student Graduation Rates

4-Year Graduate Graduation Rate - All Students



6-Year Graduate Graduation Rate - All Students



*Note: Aspirational = Avg. + (STD*2); Threshold = Avg. - (STD*2)

Tennessee Peers –Licensure Passing Rate

Licensure Passing Rate												
	2015		2016		2017		2018		2019		2020	
Institution	Education	Nursing	Education	Nursing	Education	Nursing	Education *	Nursing	Education*	Nursing	Education*	Nursing
Austin Peay State University	100.00%	96.60%	98.70%	92.20%	97.30%	95.30%	94.50%	96.90%	100.00%	100.00%	95.50%	93.80%
East Tennessee State University	100.00%	87.60%	100.00%	87.96%	100.00%	94.60%	100.00%	90.20%	97.60%	78.00%	100.00%	86.60%
Middle Tennessee State University (PW)	100.00%	79.50%	99.50%	*	98.90%	97.90%	98.10%	93.40%	94.20%	90.70%	92.10%	94.00%
Tennessee State University	100.00%	63.60%	72.20%	72.20%	100.00%	48.90%	100.00%	92.10%	100.00%	86.40%	80.00%	75.00%
Tennessee Tech University	100.00%	98.20%	95.50%	95.40%	99.60%	99.40%	99.10%	99.10%	99.50%	96.00%	100.00%	99.30%
The University of Tennessee - Chattanooga	99.00%	90.80%	93.40%	88.20%	93.10%	97.40%	95.40%	98.70%	92.20%	100.00%	99.10%	98.60%
The University of Tennessee - Martin	94.60%	90.80%	100.00%	100.00%	99.10%	100.00%	100.00%	100.00%	98.30%	96.90%	100.00%	97.00%
The University of Memphis	98.80%	89.70%	97.10%	85.00%	91.70%	90.70%	89.10%	88.00%	85.90%	87.90%	96.80%	87.00%

*The Praxis test for Education has been replaced by edTPA

APSU Licensure Passing Rates

PRAXIS Special Ed Pass Rates and PRAXIS Int. Stud. (Interdisciplinary Studies, now called Education) (First Attempt):

Recommended Aspirational Goal and Threshold of Acceptability = 100%. COE leadership recommended 100% for both exams for both aspirational goal and threshold of acceptability since COE students must pass all required PRAXIS exams to complete the program and obtain a teaching license.

NCLEX Pass Rates (First Attempt):

Recommended Aspirational Goal = 96.27% (based on a three year average of APSU NCLEX pass rates)

Recommended Threshold of Acceptability = 80% (The team recommends 80% because this is the minimum passing rate set by CCNE accreditation standards)